

CAMLOCK FITTINGS

DESCRIPTION

The cam connector, also known as the «camlock coupling», is of American origin. This is a quick coupling, where two both male and female, fit in each other. The part male is called adaptor, the female coupler part. All adaptors can be connected to all couplers.

The camlock coupling has been designed to meet the a request from the US Army, formalised under the standard MIL-C-27487. This standard frames the dimensions of the fittings, materials used, manufacturing methods as well as the operating pressures. Since 1999, it has been replaced by a new standard: Federal MIL A-A-59326A.

In Europe, a new standard has been put into force 2004:EN 14420-7, replacing the old standard DIN2828. There the last standard

incorporates the specifications of the Federal MIL A-59326A: the fittings are therefore interchangeable. In addition It has enriched the American standard as it has changed the sleeves, introduces the smooth socket fittings and the flange for the mounting of half-shell collar to the standard DIN2817. It also introduced the threaded fittings female with sealing gasket DIN2828.

Caution: the Federal MIL A-A-59326A standard does not provide standard for the following sizes: DN 15 (1/2 ' '), DN125 (5 ' ')and DN200 (8 ' '). Thus, these diameters are likely to meet compatibility issues with manufacturers.

All of the cam fittings in the Pathel Industrie company are manufactured according to the requirements of standard EN 14420-7.



USE

Camlock fittings have springs in the levers. To make the connection, simply lift the levers and then perform the pressure on the adaptor. By closing the coupling levers, this allows the connection to be secured. Fittings are used on hoses, or on tanks in chemistry or petro chemistry, and for the transfer of powders and liquids into the agri-food industry. Other areas of application are cosmetic, pharmaceutical, water treatment industries...

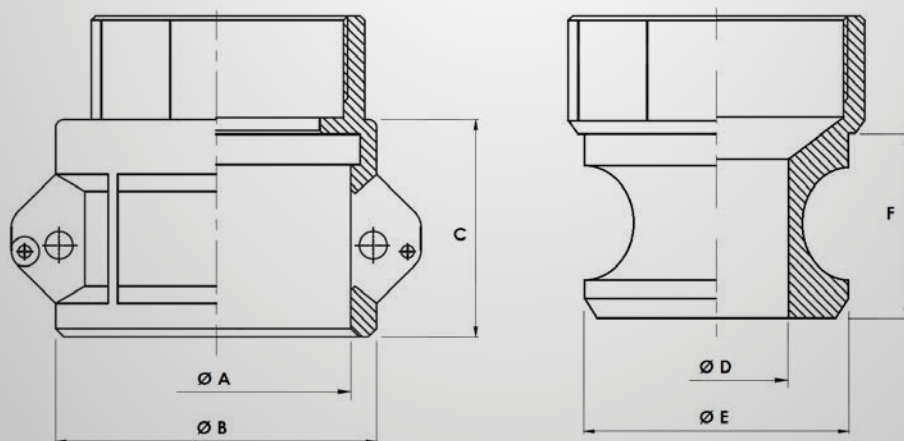
Bar SERVICE PRESSURES

Material / DN	1/2"	3/4"-2"	2"1/2	3"	4"	5"	6"	8"
Aluminium	11	18	11	9	7	5	5	5
Bronze	-	18	11	9	7	-	-	-
Brass	11	18	11	9	7	5	5	-
Stainless	11	18	16	14	7	7	7	3

These operating pressures are given for use at room temperature, in effect the high temperatures reduce these operating pressures. For any specific request, please consult us.

DIMENSIONS in mm

DN	13	20	25	32	40	50	65	80	100	125	150
A	25	32,5	36,9	46	54	63,7	76,7	92,2	120,2	146	177
B	32	41	44	55	62	74	87	104	135	160	193
C	29	31	36	42	47	52	55	58	60	56	60
D	14	20	25	30	39	49	61	74	102	129	146
E	23,8	32	36,6	45,5	53,3	63	75,7	91,4	119,5	145	176
F	25	25	32	39	41	46	46	51	54	49	54



THE RANGE OF FITTINGS AVAILABLE

• Socket fittings ringed

These fittings are used to be crimped on pipes. They can be mounted with stamped skirts, of the trunnion collars, Strip, or even with skirts toothed.

• Socket fittings smooth with flange

These fittings are used to be crimped on pipes and can be mounted with half-pipe collars shells or cranted skirts

• Threaded fittings male and female tapped

These fittings are available in thread BSP by default, or in NPT thread on request. The DIN2818 version includes a thread seal on the threaded fittings.

• Solder joints

Most often planned for an end-to-end weld (BW or butt Welding), they can be machined on request for welding by (SW or socket welding).

• Plugs

THE RANGE OF JOINTS

The classic square section gasket (black):

The classic seals are all black in colour and exist in three different materials.

- NBR/Buna: these seals have a blue line and have operating temperatures from -30 ° to 100 °C
- EPDM: with a white line, these seals are used at temperatures ranging from -40 ° to 120 °C
- FPM/Viton: with a yellow line, these seals are used for temperatures between -20 ° at 200 °C

Open Joint/U-sandwich (black):

It has a rubber core, covered with a PTFE envelope and is U-shaped to ensure better resistance to chemical applications. The open joints are all black with a White PTFE envelope. They are available in three materials:

- NBR/Buna: with a blue line, for operating temperatures ranging from -30 ° to 200 °C
- EPDM: with a white line, for operating temperatures ranging from -40 ° to 200 °C
- FPM/Viton: with a yellow line, for operating temperatures between -20 ° to 200 °C

Enclosed seal/encapsulated seal (red):

The enclosed seal has a square section and has a silicone core, completely covered by a FEP capsule. This complete FEP envelope gives it flexibility for sealing coupling of the fittings, and allows to have no contact between the product and the core of the joint.

The closed joints are red with a transparent envelope. The operating temperatures are -60 ° to 200 °C

The closed lip seal:

This gasket has a round section with a lip on the outside to perfect the sealing. It has a VITON core and a PTFE capsule

MATERIALS AVAILABLE

- Aluminium AS7G
- Brass ASTM BS84
- Stainless steel 316 / CF8M
- Fibreglass-loaded polypropylene between 25% and 30%
- Bronze