

# TANKWAGEN FITTINGS

## DESCRIPTION

The Tankwagen (tank truck) connecting, also known as the TW connection, is a non-symmetrical connection system with a locking lever to prevent vibration-induced dislocation.

It is widely used for liquid and powder bulk transport, and is very popular in the petrochemical industry.

The TW fitting consists of a handle fitting called MK (Mutter Kupplung: female fitting) and a counterparty called VK (Vatter Kupplung: the male fitting). The sealing is done by the seal between the two parties. The European Standards Committee (NEC) decided in 1973 that the 3-cam TW DN100 fittings would serve as a standard for connections for tanker and rail cars: DIN 28450 and BS 2464.3.

Tankwagen fittings have many advantages:

- The connection is fast and secure thanks to the closure by the handle
- Tightening does not necessarily require a key or tool, but can be done by hand
- They have good vibration resistance thanks to the closing notches

**The application areas are:**

- *The transport of liquids and powders,*
- *Transporting solids and gas.*



**Attention** : TW fittings are not suitable for liquefied gas or steam.

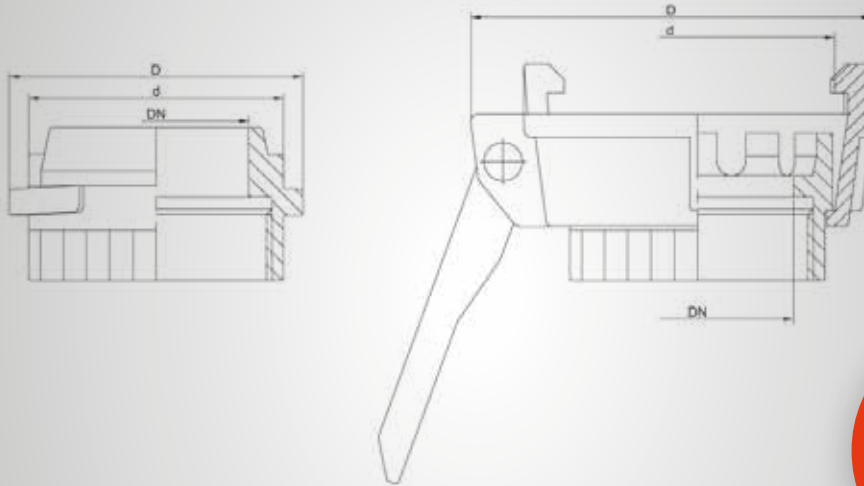
## PRESSURES ENDURED

**Service Pressure** : 16 bars.

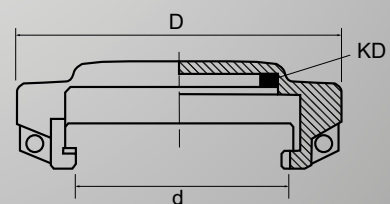
**Service Temperature** : TW fittings can be used, with adequate seals at temperatures ranging from -30 to 120 degrees Celsius.

## DIMENSIONS in mm

Type	DN	d (mm)	D (mm)
VK	50	67	77
	80	101	110
	100	125	140
MK	50	70	100
	80	80	102
	100	100	128



Type	DN	Filetage	d (mm)	D (mm)
MB	50	2"	70	105
	80	3"	102	145
	100	4"	128	175

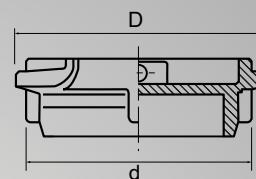


## THE RANGE OF FITTINGS AVAILABLE

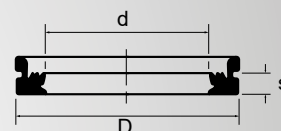
- Male and tapped female threaded fittings

- The Plugs

Type	DN	Filetage	d	D
VB	50	2"	67	77
	80	3"	101	110
	100	4"	125	140



MATIERE	DN	FILETAGE	d (mm)	D (mm)	s (mm)
NBR	50	2"	49	61.5	4.8
	80	3"	77	92	6
HYPALON	50	2"	49	61.5	4.8
	80	3"	77	92	6
VITON	50	2"	49	61.5	4.8
	80	3"	77	92	6



**NBR:** 'nitrile rubber', type of elastomer. NBR seals are excellent resistance to aliphatic hydrofuel solvents. Cold hold: ranges from -5 to -55 degrees Celsius

Maximum continuous service operating temperature: 110°C.

**Hypalon:** Polyethylene chlorosulfone (CSM)

This synthetic material has elastic properties (elastomer).

Hypalon is used in the food industry and is known for its resistance to chemical compounds, extreme temperatures and ultraviolet rays.

**Viton:** Thanks to the presence of fluoride, these fluorocarbonated elastomers have excellent resistance to heat (between -30 to 250 degrees Celsius), chemicals (such as non-polar acids, oils and solvents), flame and weather (oxygen, ozone and light), carburents and aggressive chemicals.

They are among the very special elastomers that account for 5% of rubbers.

**Thread seals are available in PTFE and PU**

## MATIÈRES DISPONIBLES

- Aluminium** with NBR seal and PU threading seal
- Copper Alloy** CW1617N NBR seal and thread seal PU
- Stainless** 316 / CF8M with Hypalon seal and PTFE thread seal
- Polypropylène** Loaded fiberglass between 25% and 30%